

The Law Society[®]

— OF WESTERN AUSTRALIA —

The **voice** of the **legal profession** in Western Australia

Cluedunnit Kids Student Guide

Proudly sponsored by



You have been chosen to take part in the *CLUEDUNNIT KIDS* COMPETITION

Your job is to work as a team, read all the information you receive in the brief of evidence, ask questions to get more information and decide which of the 3 suspects is the prime suspect. Teams then plan, create and submit their findings in an electronic or written format for judging. Only one entry per school is allowed. The top ten presentations are then submitted to the Cluedunnit Kids judging panel. You are competing against other student teams from schools across Western Australia.



Cluedunnit Kids: **Brief of Evidence**

The brief of evidence is posted online and contains witness statements, photographs and forensic evidence.

This brief has been gathered by the investigating police officer.

The brief contains important information about the prime suspect. However, it would be wise not to jump to any conclusions before you have asked your six questions and considered everything.

Even if you think you know who the prime suspect is you need to be able to prove, so you are sure and have no real doubt, that the prime suspect committed the crime.



Cluedunnit Kids: Rules



You CAN:

- give your team a name;
- talk to your team mates and teachers about the case and the brief of evidence;
- ask questions to gather more evidence to identify the prime suspect and to eliminate the other suspects. Each school can ask **ONLY** 6 questions per school;
- plan, create and submit your findings in a creative way of your choosing. Be creative and have fun.

ONLY members of the investigating team can have a speaking role in the submission (your classmates can be in the background of any video you make but they cannot talk).

Cluedunnit Kids: **Investigating and Collecting Evidence**

As part of your investigation each school can, and should, ask up to 6 questions to gather more evidence to identify the prime suspect and to eliminate other suspects.

Make sure each question that your school asks counts. Make sure each question is directed to someone and is specific in what it asks.

The more questions a school asks, the more answers you will receive and the more evidence you will have to prove the case.

We strongly recommend you use up all of your 6 questions to gather as much evidence as possible so that you can clearly identify the prime suspect and eliminate the other suspects.



Cluedunnit Kids: **Question Examples**

When asking questions, you must be specific in what you ask and you must nominate the person to whom the question is directed.



“Did anyone see anything and what did they see?”

(Not a good question. Two very broad questions are asked and this is not allowed. Also, the question is not directed to anyone.)

“Can you ask Constable Linus Uppe what Justin Case saw at midnight on the corner of Wright Place and Knot Court, please?”

(Great question. Specific in what it asks and directed to a particular person.)



Cluedunnit Kids: **More Question Examples**

Samples of poor questions are in orange. These are either too vague or don't nominate the person who is to provide the information. The correct style of questioning is in green. These are clear, specific and indicate who is to provide the information.

1. *If there are any witnesses, what did they see or hear?*

Can you ask Sergeant Justin Thyme for a witness statement from the waste recycling truck driver who was traveling on Surf Street, please?

2. *Can we get any information on why Robyn Holden was absent from school?*

Can you ask the school principal if any reason was given for Robyn Holden's absence from school on 14 March, please?

3. *Whose footprints were outside the driver's side door?*

Can you ask Sergeant Justin Thyme for the foot size of the suspects, please?

If you do not ask a clear specific question directed to a particular person, the Education Officers will be unable to answer the question and that question will be wasted.

Cluedunnit Kids: **Question Rules**

- Questions **MUST** be used to get further evidence or to clarify evidence.
- You **CANNOT** ask if a certain person is guilty.
- You **CANNOT** ask who committed the offence.
- You **CANNOT** ask the Education Officers for their opinion.
- You **CANNOT** ask for a copy of everything the police have.



Cluedunnit Kids: Evidence Can Take Many Forms

- Witness statements
- Scientific evidence

(e.g. Fingerprints, Chemical analysis, DNA)

- Physical evidence

(e.g. Notes, CCTV security footage, Video record of interview)

- Expert evidence

(e.g. statement by a qualified expert in a particular field; a medical doctor, a forensic expert, an accountant etc)



Cluedunnit Kids: Creative Presentation

Using the evidence gathered after asking the 6 questions, each team then plans, creates and submits their findings in a creative way of their choosing. This is often in an electronic/digital format (video interviews, video songs, video song + dance, animations, Powerpoint files, video re-enactment) or a written format (pop-up book, board game, booklet, comic, poster).

Your presentation should:

- be creative;
- identify the prime suspect with supporting evidence with details on how the other suspects have been eliminated;
- apply legal principles (Presumption of innocence, Burden of proof and Standard of proof); and
- suggest appropriate sentencing options.

Each school can only submit one entry for judging. Schools that have more than one team must run an in-school competition and the winning entry of the in-school competition is then submitted for judging.

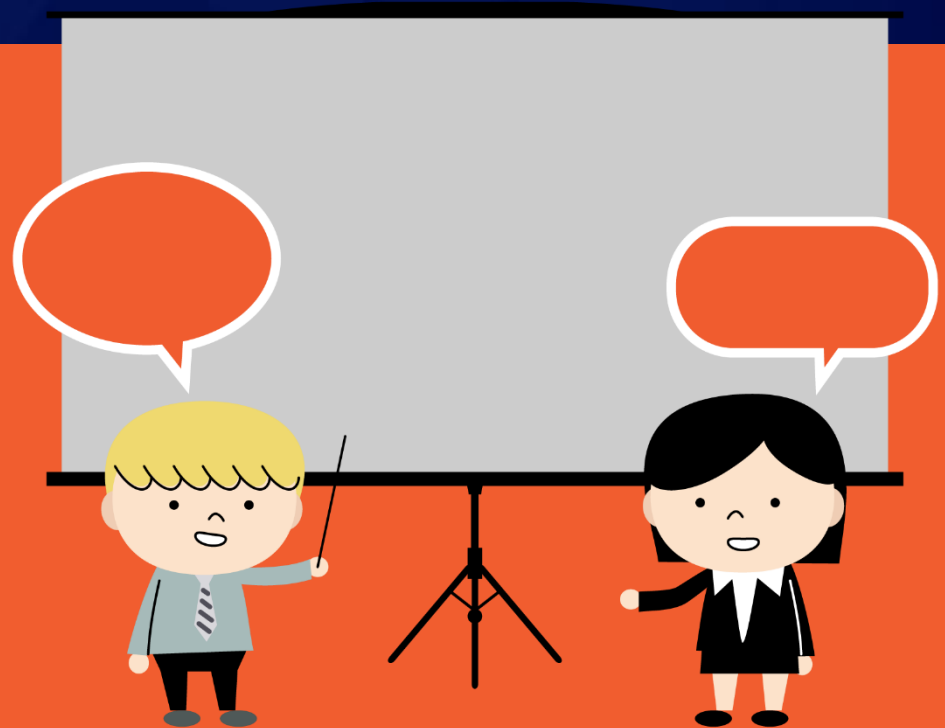
Teams should be creative whilst incorporating all of the evidence they have collected.

Limit electronic/digital presentations to a maximum of 5-7 mins.

Cluedunnit Kids: **Presenting Your Case**

Your team will need to make sure your submission answers the following questions:

- Who is the prime suspect?
- What evidence do you have to prove your case?
- What evidence do you have to eliminate the other suspects?
- Is your submission interesting and creative?
- Does your submission reflect legal principles?
- Is the sentence appropriate?



Cluedunnit Kids: Judging Criteria



The judges award the *Cluedunnit Kids* prizes based on:

- Correct identification of the suspect – up to 2 points
- Supporting evidence – up to 10 points
- Creativity – up to 10 points
- Application of legal principles – up to 4 points
- Appropriate sentencing – up to 4 points

TOTAL = 30 points

It is expected that the submissions are the Year 6 or Year 5/6 students' work with teachers and/or older students providing limited assistance and direction.

The judging panel includes representatives from the Children's Court of WA, the Magistrates Court of WA, a WA Police Officer, a lawyer from Legal Aid WA and a representative from Curtin University Law School

Feedback from the judging panel on submissions is not provided and the judging panel's decisions are final.

Cluedunnit Kids: **Awards**

Certificate of participation and commemorative gift: Every student that participates in *Cluedunnit Kids* receives a certificate of participation and commemorative gift.

Winning Team Submission: The winning team submission will be awarded a plaque and a book pack for their school (or equivalent). Each winning member of the team will receive a medal.

Runner up Team Submission: The runner up team submission will receive a plaque and a book pack for their school (or equivalent). Each member of the team will receive a medal.

Ambassador School Award: The ambassador school is selected based on the manner the teams conduct themselves during the competition. Students at an ambassador school have demonstrated perseverance, commitment and exemplary engagement with the Education Officers. A plaque and a book voucher are awarded to the ambassador school (or equivalent). Each member of the team will receive a medal.

A *Cluedunnit Kids* awards ceremony takes place prior to the end of Term 2. The awards ceremony may be scheduled at the winning team's school or at the Perth Children's Court.



Cluedunnit Kids: 2020 Awards

2020

Winning Entry: [The Fast and the Curious](#), Peter Moyes Anglican
Community School

Runner Up Entry: [The Iona Team](#), Iona Presentation College

Ambassador School: Roseworth Primary School

Click on the 2020 Winning Entry and Runner Up Entry hyperlinks above
to view both winning entries.

Cluedunnit Kids: **Team Leaders**

- **Team leaders are responsible for asking questions to the Francis Burt Law Education Programme Education Officer.**
- **Questions are emailed to schools@lawsocietywa.asn.au . *It would be good to show your questions to your teacher first.* You can also telephone the Education Officer on (08) 9324 8686, however email is best.**
- **Please upload your digital submission to Dropbox, or another platform, and send us the link. Alternatively, if you are posting your submission please allow enough time for it to reach us no later than 4pm on the closing date for submissions in May. Our judges have very tight timelines to meet and late submissions cannot be accepted.**

Cluedunnit Kids: **Contacts**

Francis Burt Law Education Programme

Education Officer

Email: schools@lawsocietywa.asn.au

Phone: (08) 9324 8686



Cluedunnit Kids

Now you have all the *Cluedunnit Kids* information.

In late February the brief of evidence will be posted online and you should be ready to ask questions to get more evidence to identify the prime suspect. Then you and your team mates will plan, create and submit your findings in a creative way of your choosing.

Have fun, ask questions and get creative.



Cluedunnit Kids: **Legal Principles**

Presumption of innocence: Everyone accused of a crime is thought to be innocent until proven guilty.

Burden of proof: The prosecution has the responsibility to, and must, prove that the accused person is guilty.

Standard of proof: The level of proof required to find a person guilty of a crime is beyond reasonable doubt. In everyday language, this means that after hearing all of the evidence you are sure that the person did the crime and you have no real doubts in your mind that the accused did it.

Cluedunnit Kids: Magistrates Court

The types of criminal matters in *Cluedunnit Kids* would be heard in the Magistrates Court of Western Australia if the accused was an adult. The maximum penalty for a Magistrates Court matter is up to 3 years imprisonment. Types of matters heard by the Magistrates Court include road traffic matters, stealing under \$50,000, disorderly conduct , minor assaults and lots and lots of others.

In the average year, more than 95% of all criminal matters in WA are heard by the Magistrates Court.

The judicial officer in the Magistrates Court is a Magistrate who is referred to as “Your Honour”. Magistrates do not wear robes or wigs.

The gavel (wooden hammer) has never been used in West Australian or Australian courts.

Remember that the prime suspect is thought to be **innocent until proven guilty**.

Cluedunnit Kids: Children's Court

If the accused in a *Cluedunnit Kids* scenario is aged 10 to 17 years of age, the criminal matter would be heard in the Children's Court of Western Australia.

The Children's Court also deals with child protection and care applications for children under the age of 18.

The focus of the Children's Court in criminal matters is to ensure the fair treatment of children who have, or are alleged to have committed offences. The focus of the Children's Court in protection and care proceedings is to promote the wellbeing of children and to ensure that the children are protected from harm.

Magistrates are responsible for the less serious criminal matters in the Children's Court. The President of the Children's Court is responsible for the more serious criminal matters.

The President and Children's Court Magistrates are referred to as "Your Honour". The President and the Magistrates in the Children's Court do not wear robes or wigs.

The jury system does not exist in the Children's Court.

The gavel (wooden hammer) has never been used in West Australian or Australian courts.

Remember that the prime suspect is thought to be **innocent until proven guilty**.

Cluedunnit Kids: Resources

- [Francis Burt Law Education Programme](#)
- [Legal Aid WA](#)
- [Children's Court](#)
- [Magistrates Court](#)
- [Western Australia Police](#)